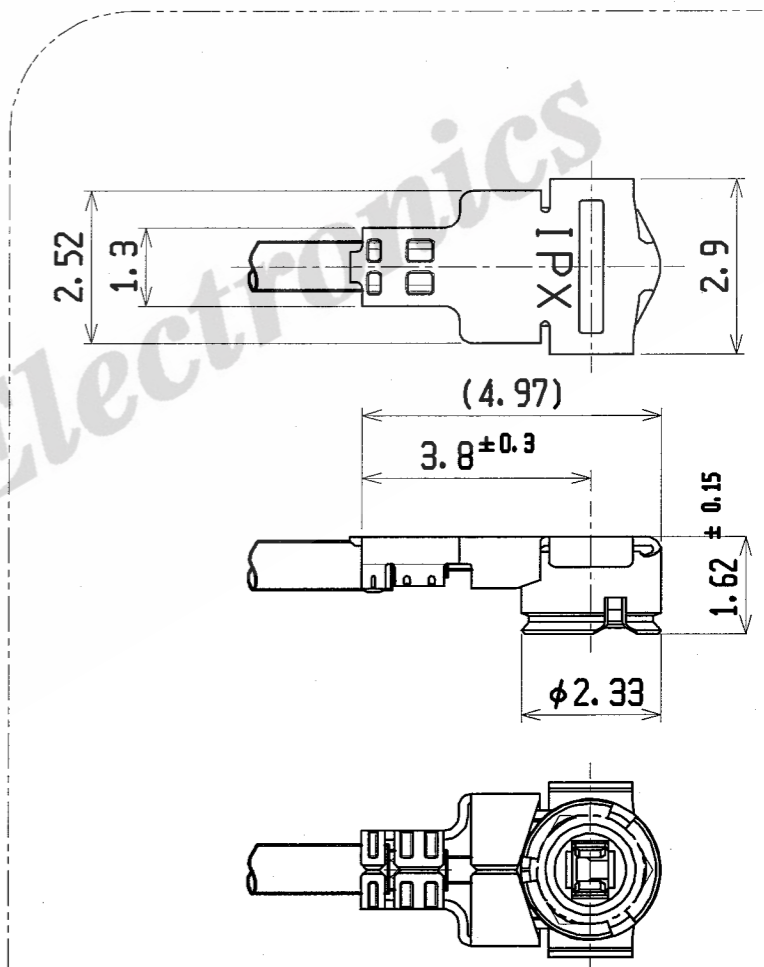
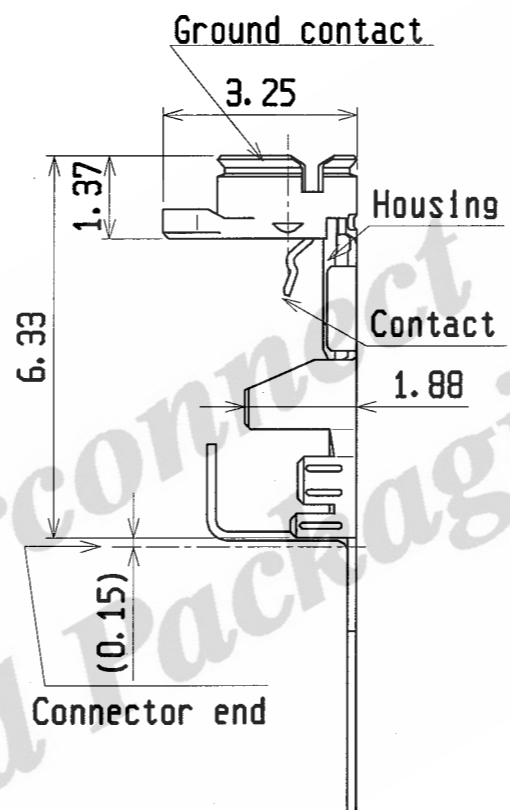
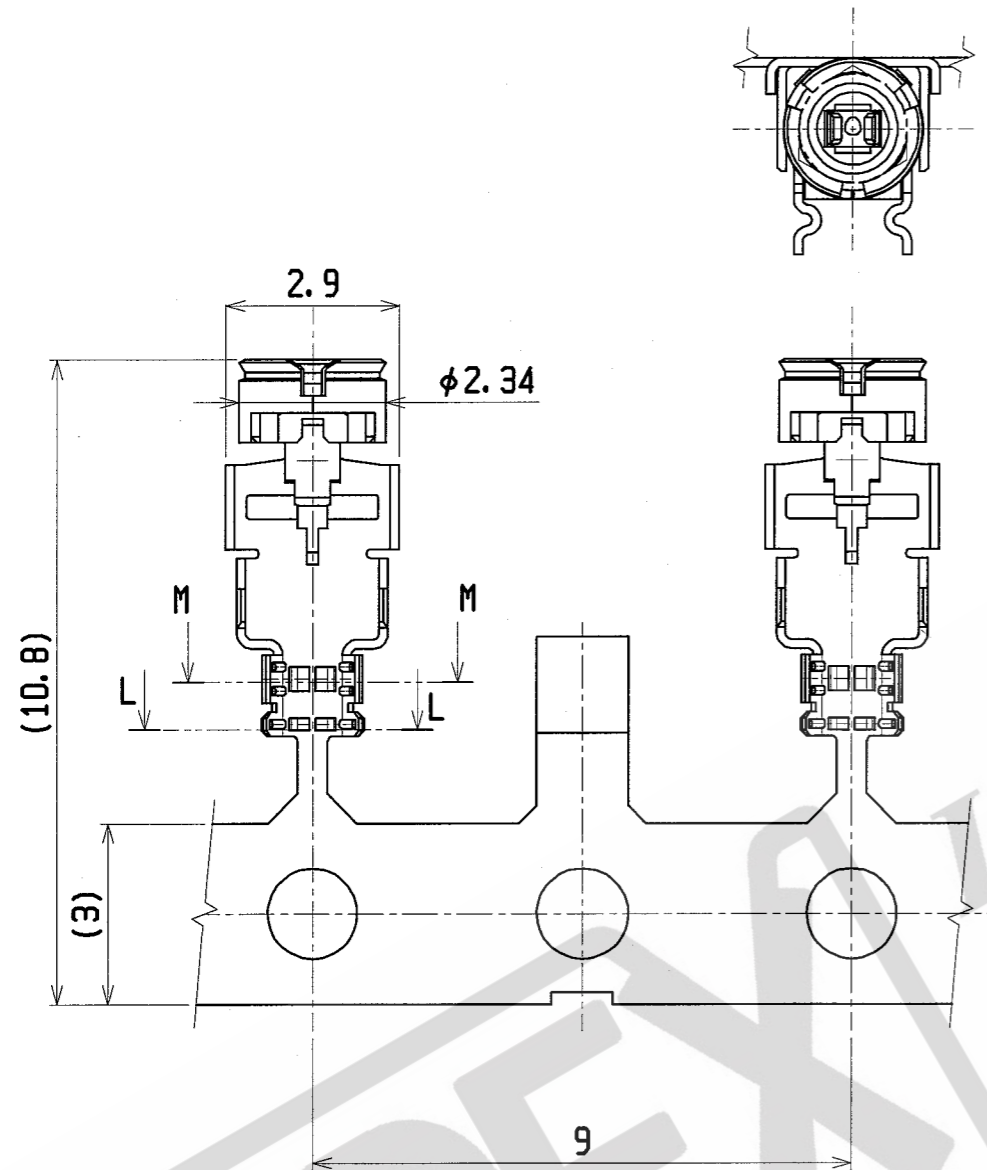


PART NO.	Cable
20311-011R-08	FOR AWG#36(OD $\phi$ 0.81)



Cable Ass'y

GENERAL TOLERANCE	
6 MAX.	$\pm 0.2$
6 OVER MAX. 30	$\pm 0.3$
30 OVER MAX. 120	$\pm 0.5$
ANGLE	$\pm 2^\circ$

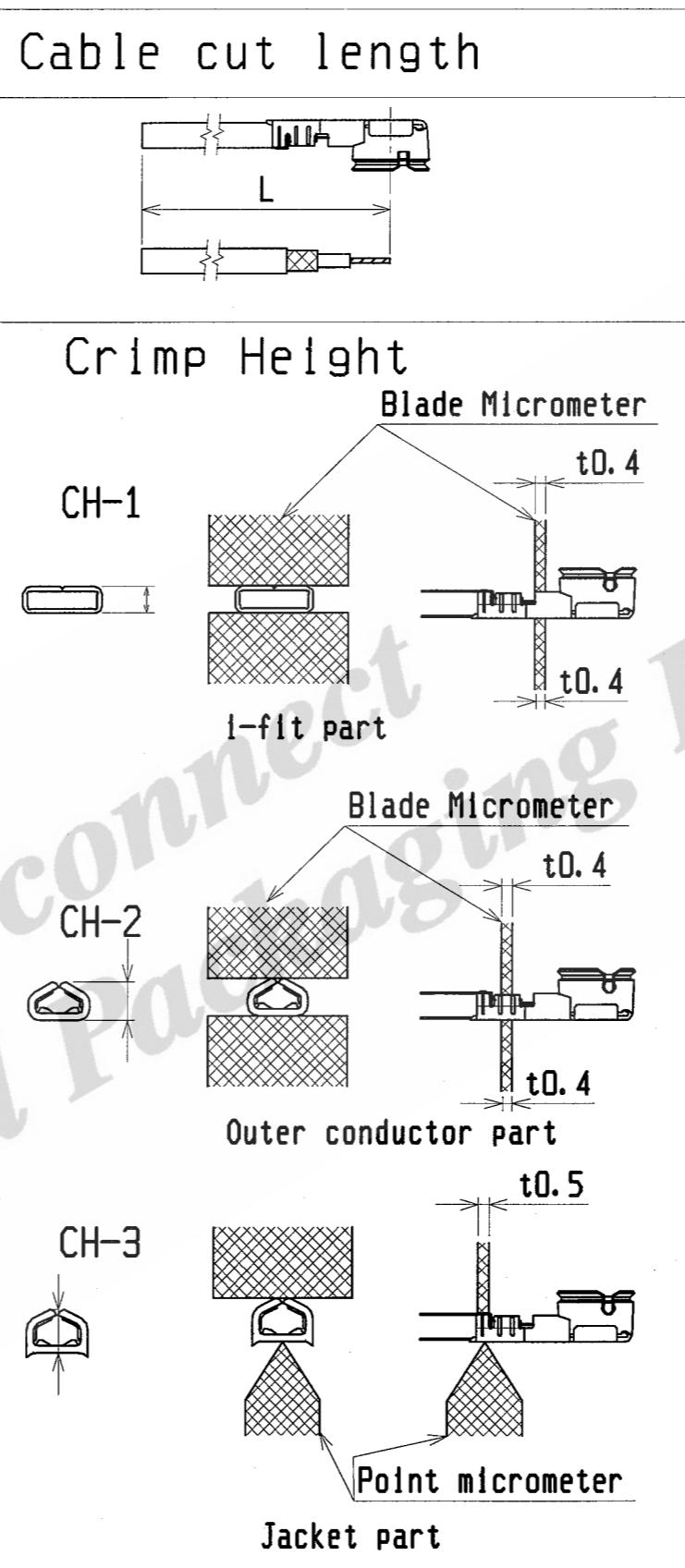
DATE	MAR/06/02	<b>I-PEX</b> Interconnect and Packaging Electronics TOKYO, JAPAN	TITLE MHF II Connector (Ground Contact : Gold Plating)	General
DATE	MAR/07/02			
DATE	MAR/07/02	TITLE		
PROJECTION	SCALE	UNIT	DWG. No.	SHEET
	8/1	mm	20311	1/3
				REV.
				6

FORM REV. 4

I-PEX Confidential III

WAS T

Part No.	20311-011R-08	
Applicable cable nominal dimension	<p>B : Maximum length C : Minimum length <math>1.05 \pm 0.1 = A - B \neq A - C</math></p>	
Must not use solder coated Inner conductor and outer conductor. 中心導体，外部導体への半田コーティングは不可		
Braided shield of Outer conductor 外部導体の編組	Single / 1重編組	
Part No. of semi auto termination machine	90225-008A	
Sect. M-M Sect. L-L		
Crimp Height	CH-1	0.79 ~ 0.84
	CH-2	0.82 ~ 0.88
	CH-3	0.80 ~ 0.90



**I-PEX** Interconnect and Packaging Electronics TOKYO, JAPAN

TITLE  
MHF II Connector  
(Ground Contact : Gold Plating) General

SCALE UNIT DWG. No. SHEET REV.  
8/1 mm 20311 2/3 6

Notes

1. Material

(1) Housing : LCP , UL94V-0 , NATURAL

(2) Contact

phosphor bronze

Au 0.1 $\mu$ m MIN. over Ni 1.27 $\mu$ m MIN.

(3) Ground contact

phosphor bronze

Au 0.05 $\mu$ m MIN. over Ni 1.27 $\mu$ m MIN.

2. Packing : reel

3. Mating partner part No.

: 20279-001E-01, 20441-001E-01

1. 材料

(1) ハウジング : LCP, UL94V-0, ナチュラル

(2) コンタクト

: りん青銅

: 金メッキ 0.1 $\mu$ m MIN. 下地 ニッケルメッキ 1.27 $\mu$ m MIN.

(3) グランドコンタクト

: りん青銅

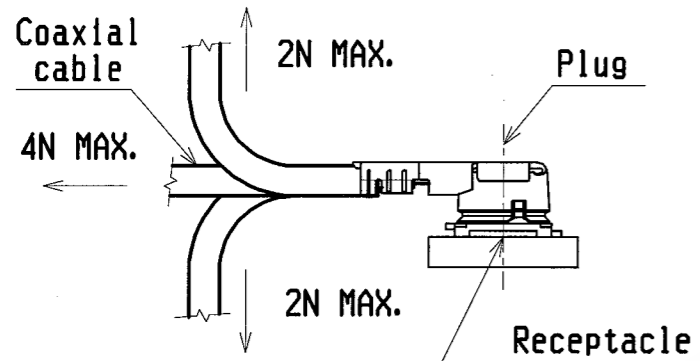
: 金メッキ 0.05 $\mu$ m MIN. 下地 ニッケルメッキ 1.27 $\mu$ m MIN.

2. 梱包 : リール

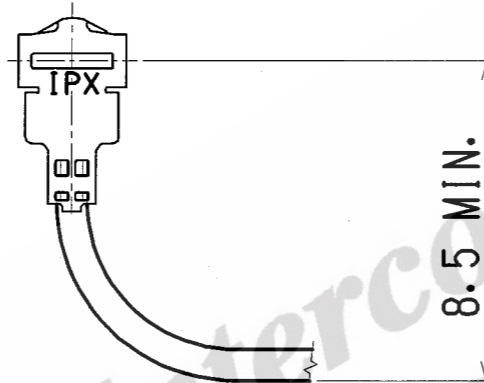
3. 嵌合相手 part No.

: 20279-001E-01, 20441-001E-01

4. Permissible load of cable at mating  
コネクタ嵌合後のケーブルに対する荷重



5. Recommend dimensions for the minimum bending  
最小曲げ推奨寸法



6. Suggestions for mating & unmating operation.

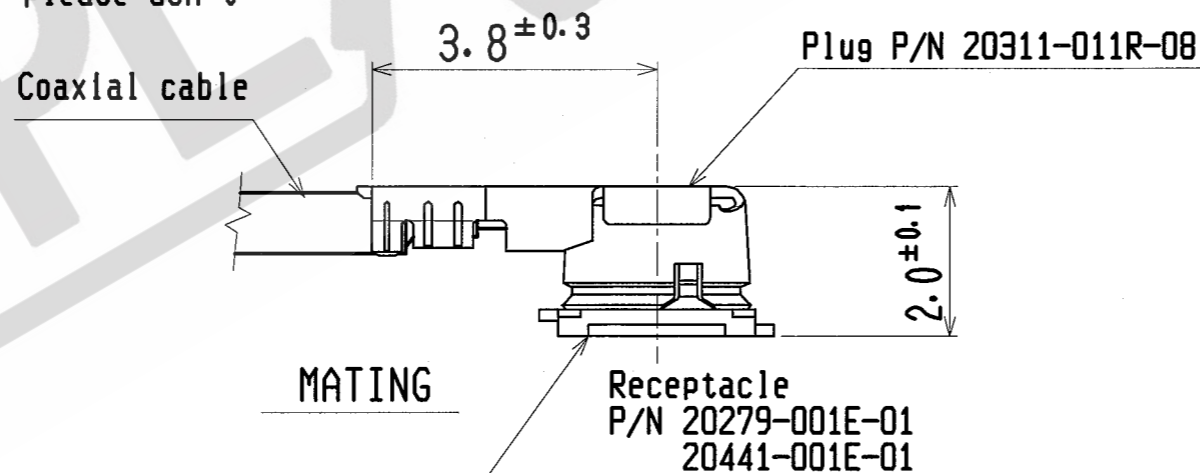
6-1 Mating.

Please mate the connector straightly to vertical direction as much as possible, adjusting the mating axis of plug and receptacle. As excessive slant angle mating may break the connector, please don't do it.

6. コネクタ嵌合時および抜去時の注意

6-1 コネクタ挿入時

PlugとReceptacleの嵌合軸を合わせ、できるだけ垂直に挿入して下さい。極端な斜め挿入は行わないで下さい。コネクタ破損の原因となりますので、過度なこじり挿抜は行わないで下さい。

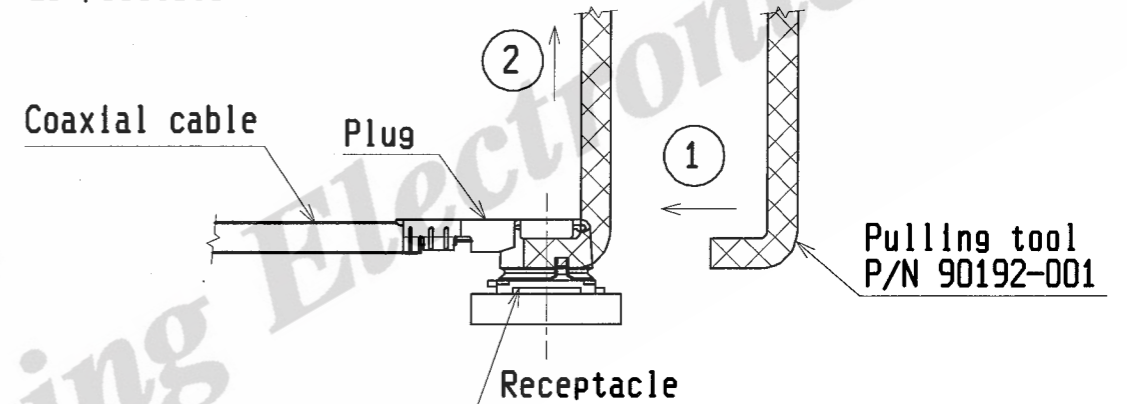


6-2 Unmating.

(1) In case of unmating by pulling tool. Please use the pulling tool as the following drawing, and please pull plug to vertical direction as directly as possible.

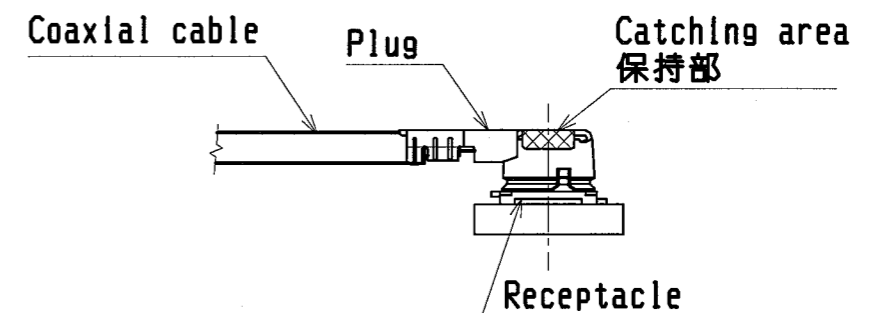
6-2 コネクタ抜去時

(1) 抜去ジグを用いる場合  
下図のようにできるだけ垂直に引き抜いて下さい。



(2) In case of unmating directly by hand. Please catch the catching area of plug, and please pull plug to vertical direction as directly as possible.

(2) 手で直接引き抜く場合  
下図の保持部をつかみ、できるだけ垂直に引き抜いて下さい。



<b>I-PEX</b>		Interconnect and Packaging Electronics TOKYO, JAPAN	
TITLE MHF II Connector (Ground Contact : Gold Plating)		General	
SCALE	UNIT	DWG. No.	SHEET REV.
-/-	mm	20311	3/3 6